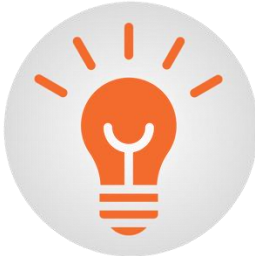


# Kingsley Area Schools 2025 Bond Proposal

## 2025 BOND PROPOSAL FOCUS:



**SAFETY • COMMUNITY • OPPORTUNITY**



**Vote on or before  
Tuesday, May 6, 2025**

## What is on the ballot?

On the ballot is a \$39.2 million school improvement bond proposal. If approved, it would provide building & site improvements to address identified and ongoing facility needs based on completed assessments and community input.

### KINGSLEY AREA SCHOOLS BOND PROPOSAL

Shall Kingsley Area Schools, Grand Traverse and Wexford Counties, Michigan, borrow the sum of not to exceed Thirty-Nine Million Two Hundred Thousand Dollars (\$39,200,000) and issue its general obligation unlimited tax bonds therefor for the purpose of:

erecting new additions to and remodeling, equipping and reequipping and furnishing and refurbishing the middle/high school building; remodeling school buildings; acquiring, installing, equipping and re-equipping the middle/high school building for instructional technology; and preparing, developing and improving the middle/high school site?

The following is for informational purposes only:

The estimated millage that will be levied for the proposed bonds in 2025 is 4.90 mills (\$4.90 on each \$1,000 of taxable valuation). The maximum number of years the bonds may be outstanding, exclusive of any refunding, is thirty (30) years. The estimated simple average annual millage anticipated to be required to retire this bond debt is **4.07 mills** (\$4.07 on each \$1,000 of taxable valuation).

The school district does not expect to borrow from the State to pay debt service on the bonds. The total amount of qualified bonds currently outstanding is \$0. The total amount of qualified loans currently outstanding is \$0. The estimated computed millage rate may change based on changes in certain circumstances.

(Pursuant to State law, expenditure of bond proceeds must be audited and the proceeds cannot be used for repair or maintenance costs, teacher, administrator or employee salaries, or other operating expenses.)



## How will the bond proposal affect my tax rate?

Kingsley Area Schools currently levies 0 mills. If the 2025 bond proposal is approved by voters, the net debt tax rate is expected to increase by 4.90 mills from current levels with an average millage rate of 4.07 throughout the life of the bond. The debt payoff for this bond is expected to be under 30 years.



### **Homestead Property Tax Credit and Senior Tax Credit**

Households that pay homestead property taxes greater than 3.2% of their annual income may be eligible for Michigan's Homestead Property Tax Credit. **Eligible households may deduct up to 60% (up to 100% for senior citizens)** of the millage increase cost up to a \$1,800 Homestead Tax Credit limit. **Contact your accountant or tax preparer for more information.**

# How will the bond proposal affect my tax rate?

HOME MARKET VALUE	HOME (SEV) TAXABLE VALUE	YEARLY COST	MONTHLY COST	DAILY COST
\$200,000	\$100,000	\$490	\$40.83	\$1.34
\$300,000	\$150,000	\$735	\$61.25	\$2.01
\$400,000	\$200,000	\$980	\$81.67	\$2.68

**NOTE: If taxpayer qualifies for the State Homestead Property Tax Credit, the "net" tax rate could be less than shown above. Talk to your tax preparer to see if you qualify.**





## How were the bond projects identified?

- The school district completed an internal review of all school facilities as part of the school district's facility planning process.
- After the internal review, school officials worked with architectural and construction management specialists to finalize the list of bond proposal projects to be addressed.
- **Several community meetings were held as well as a community survey to address concerns.**
- Due to the age of school facilities, the cost of the initial project list totaled over **\$51 million.**
- The project list was narrowed down to first address priority needs such as lack of space, safety, and security.
- The board is dedicated to HVAC and roof infrastructure issues without bond proposal dollars.



## Why a bond proposal now?

- If approved by voters, the 2025 bond proposal would address the currently identified issues such as **lack of classroom space**, and build new spaces for **academics, athletics, and the arts**.
- Upgraded facilities would provide for student and **community access** to new, state-of-the-art facilities like gymnasiums and fitness centers.
- This bond proposal would also improve **security infrastructure**, including modern security measures, such as secure vestibules and updated access systems.

### 2025 BOND PROPOSAL FOCUS:



**SAFETY • COMMUNITY • OPPORTUNITY**



# **What Projects Are in This Bond Proposal?**





## Key District Changes:

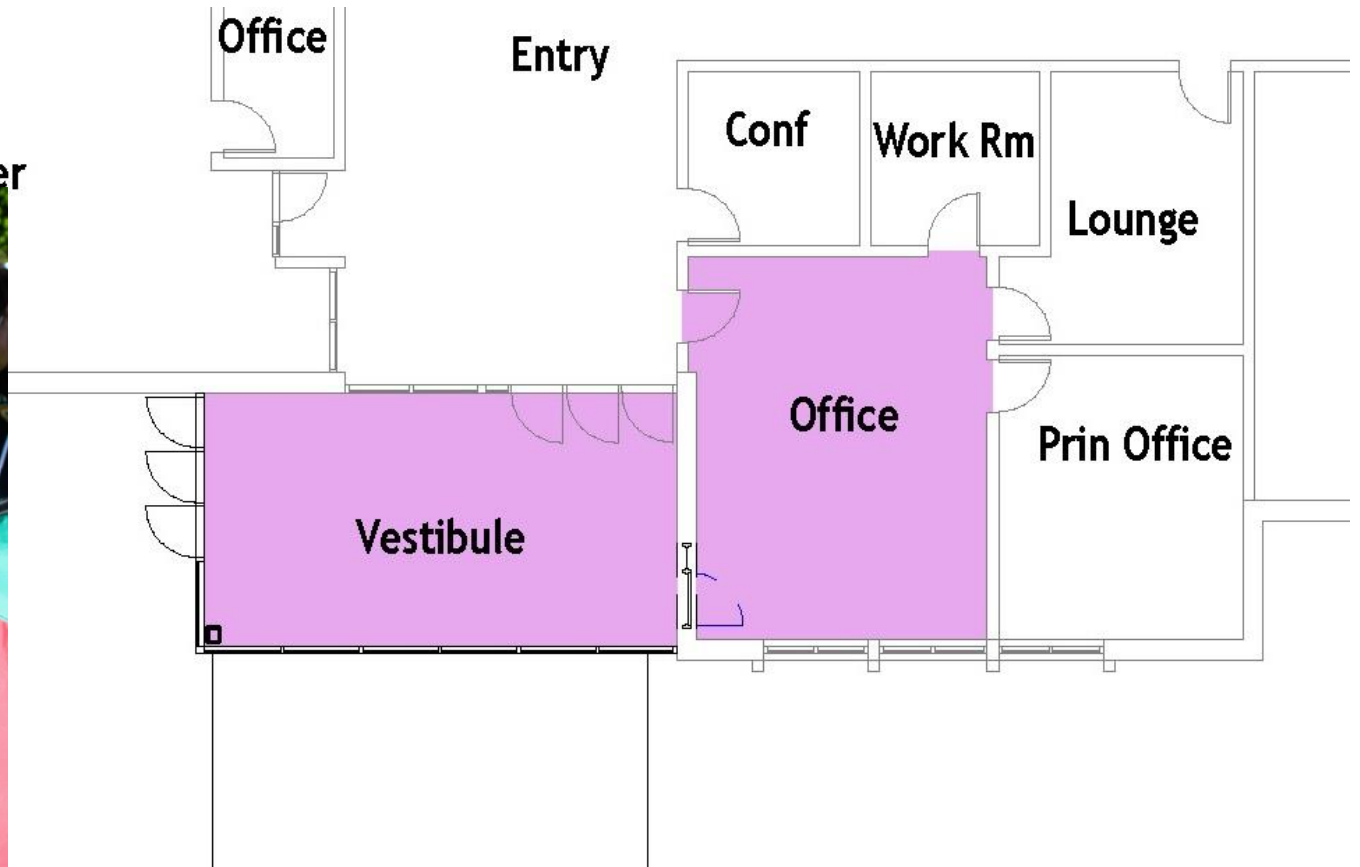
- If the bond proposal is approved by voters, the existing Elementary School will become the new **Lower Elementary** for grades Pre K-1.
- The existing Middle School will become the new **Upper Elementary** for grades 2-5.
- A new **Middle School** addition will be added to the **High School**, creating one unified campus.





# Lower Elementary School (Existing Elementary)

- New Secure Entry Vestibule
- New Entry Doors



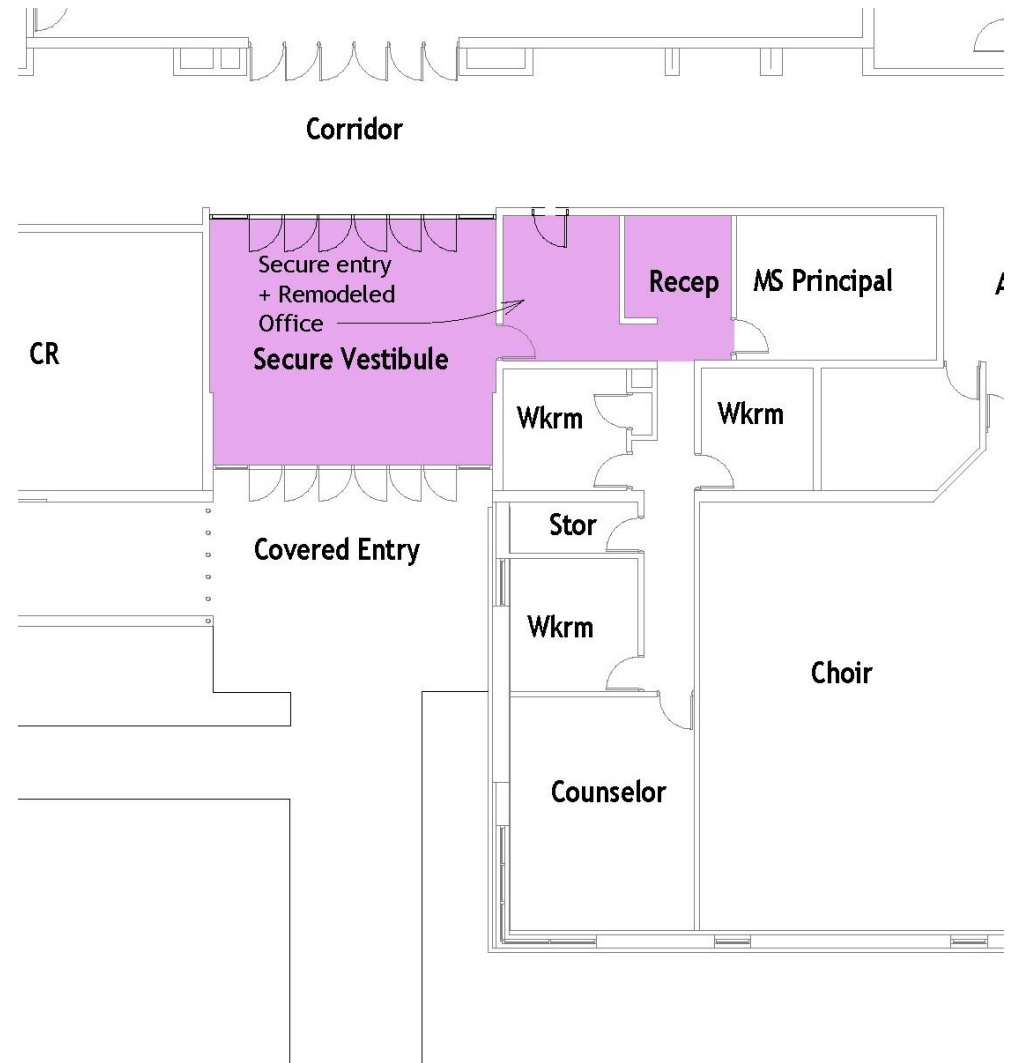
## New Secure Entry Vestibule

Conceptual, subject to change



# Upper Elementary School (Existing Middle School)

- New Secure Entry Vestibule
- New Entry Doors



**New Secure Entry Vestibule**  
Conceptual, subject to change

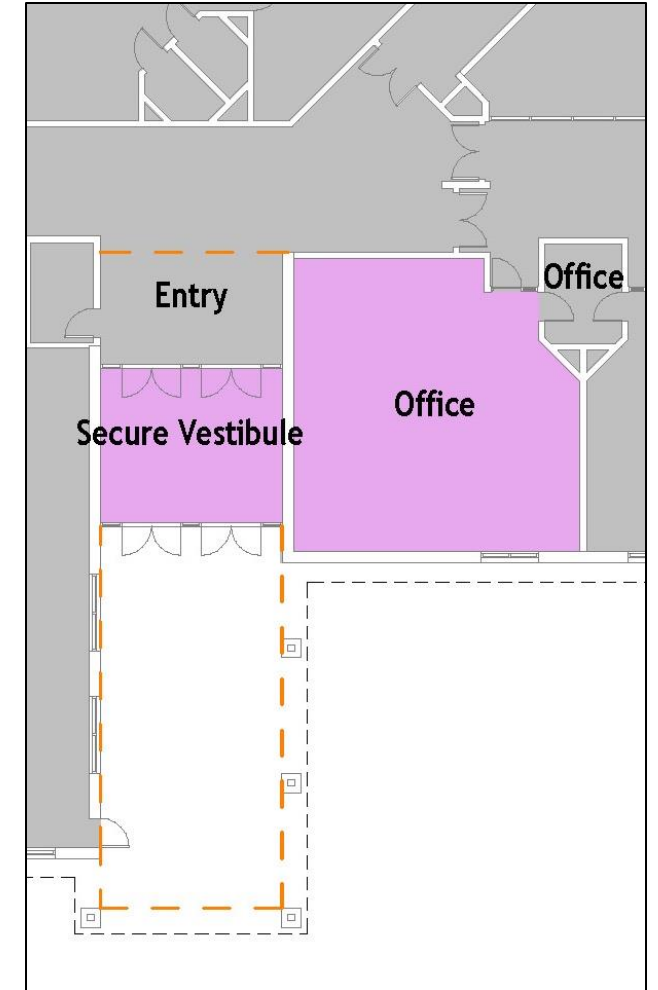
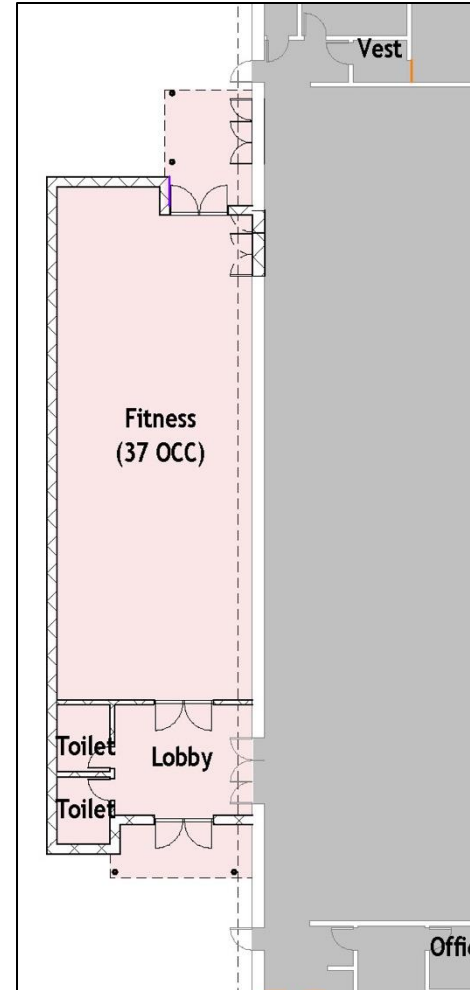


# High School

- New Secure Vestibule Entry
- Fitness Addition for Student & Community Use



**New Fitness Center for Student & Community Use**  
Conceptual, subject to change



**New Secure Vestibule Entry**  
Conceptual, subject to change





# Middle School

(New Addition on to the High School)

- New Classrooms
- Multi-use Space
- Separate Storage Area for Band & Drama
- Choir Room
- Commons Area
- Technology Devices
- Furniture for Classrooms
- Sitework for Addition



## Kingsley Arts Center Entry

Conceptual, subject to change

**New 53,756 sf Middle School Addition**

Conceptual, subject to change



# Middle School

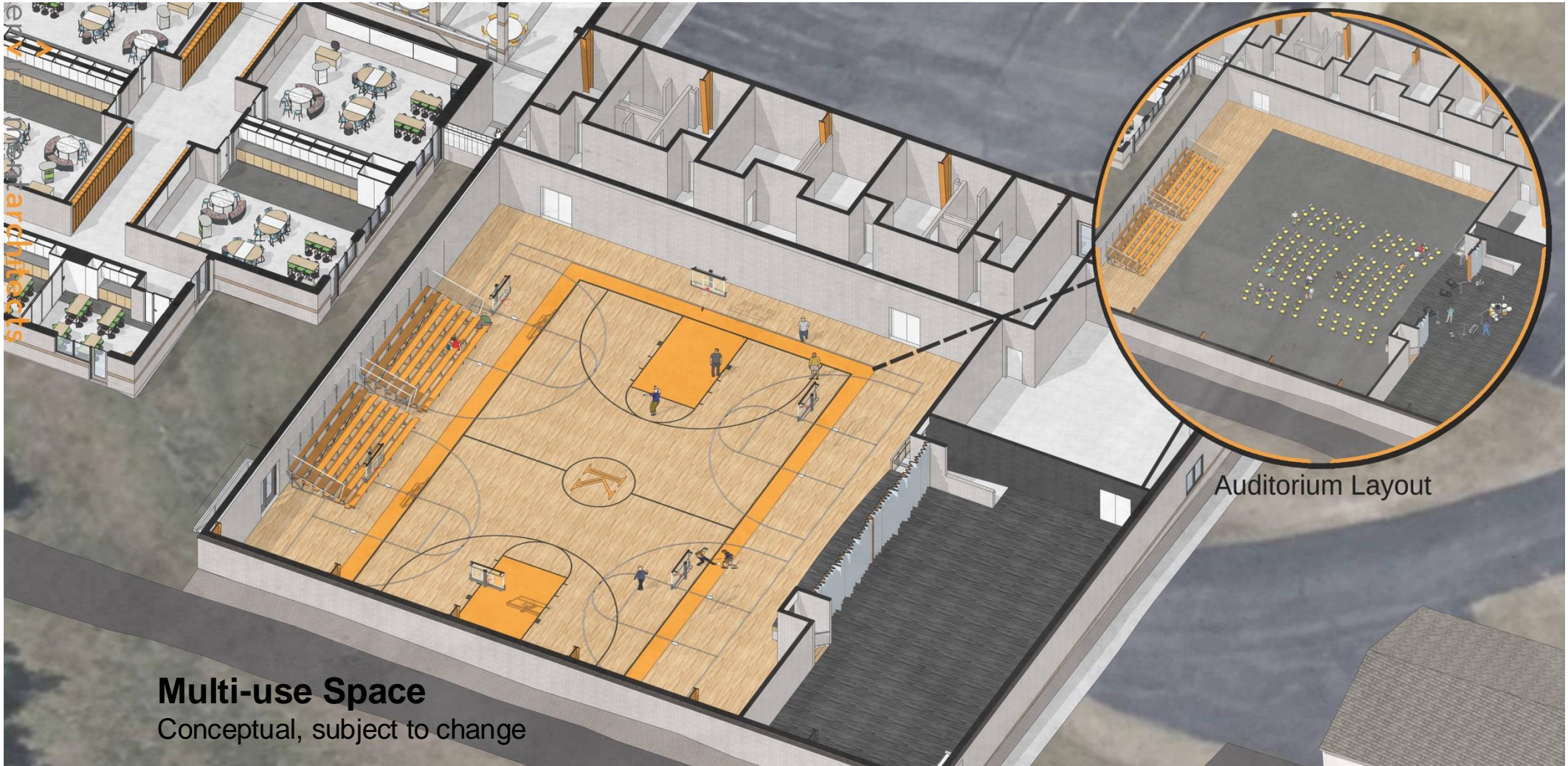
(New Addition on to the High School)





# Middle School

(New Addition on to the High School)



**Multi-use Space**  
Conceptual, subject to change

Auditorium Layout





# Middle School

(New Addition on to the High School)



environmentalarchitects

**Multi-use Space**  
Conceptual, subject to change





# Middle School

(New Addition on to the High School)



environmentalarchitects

**Multi-use Space**  
Conceptual, subject to change





# Middle School

(New Addition on to the High School)



environmentarchitects

**Art Center/Commons Area**  
Conceptual, subject to change



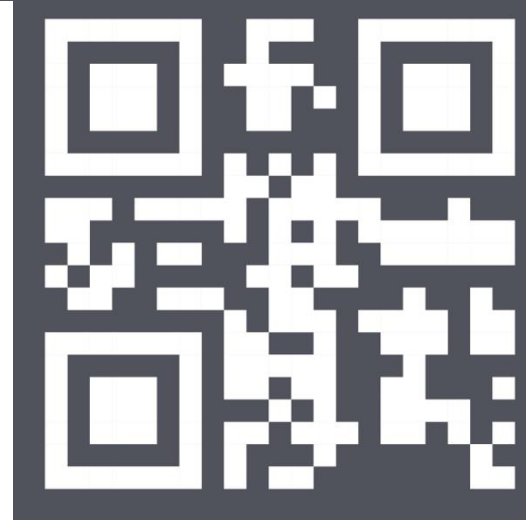


## Voting Information

Register to vote online [Michigan.gov/vote](https://Michigan.gov/vote) or visit your local Clerk's office up until election day

You can request an absentee ballot online at [Michigan.gov/vote](https://Michigan.gov/vote) or at your local Clerk's office on or after **March 27, 2025**

**Election Day is:  
Tuesday, May 6, 2025  
Polls are open 7am-8pm**



[Michigan.gov/vote](https://Michigan.gov/vote)

**Return Envelope**



**Absentee Ballots are  
available March 27, 2025**



# Q&A

Contact Superintendent  
Joshua T. Rothwell via email at  
[jrothwell@kingsleyschools.org](mailto:jrothwell@kingsleyschools.org)



More info available at:  
[kingsleyschools.org/2025bond](https://kingsleyschools.org/2025bond)

